



REIN  
ROSATOM

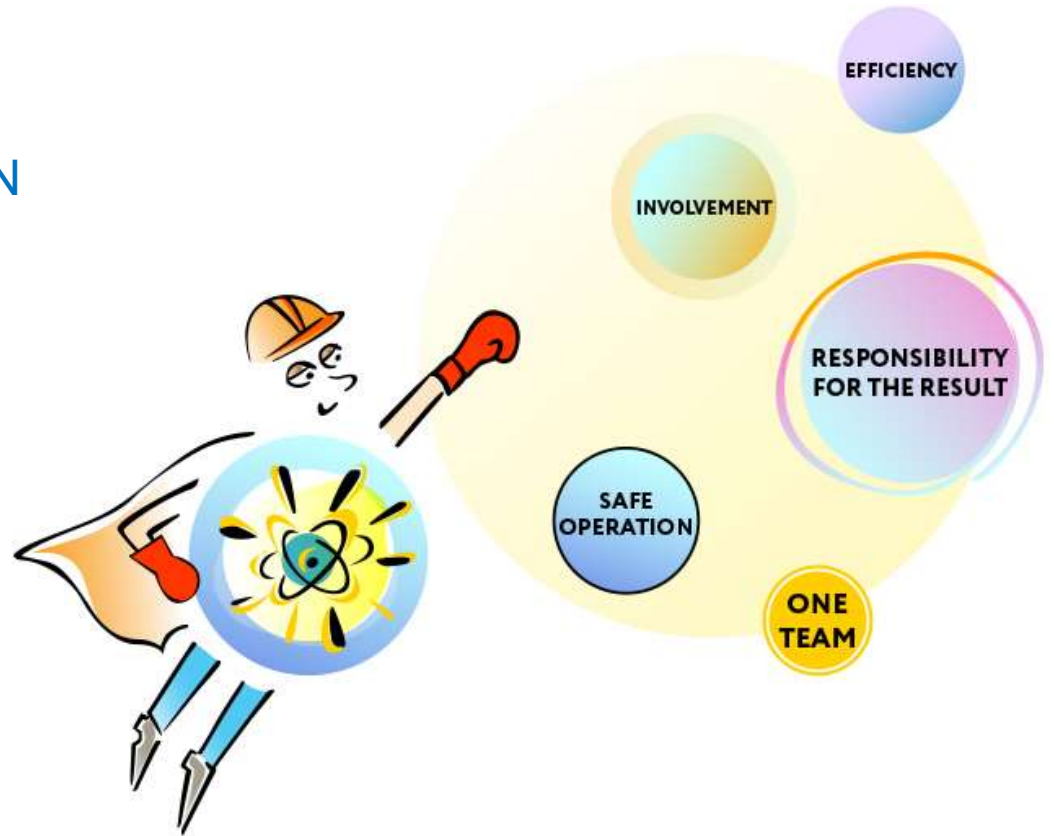
# **PARTNERSHIP IN TRAINING IN NUCLEAR NEW-BUILD PROJECTS**

**Victoria Zhuravleva**

Head of Training Department  
RAOS Project Oy

# AGENDA

1. REIN - GLOBAL PARTNER IN NUCLEAR INDUSTRY
2. TRAINING SUPPLY CHAIN
3. MANAGEMENT
4. SUSTAINABLE SUCCESS THROUGH PARTNERSHIP
5. LESSONS LEARNT
6. TAKE-AWAY MESSAGE



# REIN - GLOBAL PARTNER IN NUCLEAR INDUSTRY

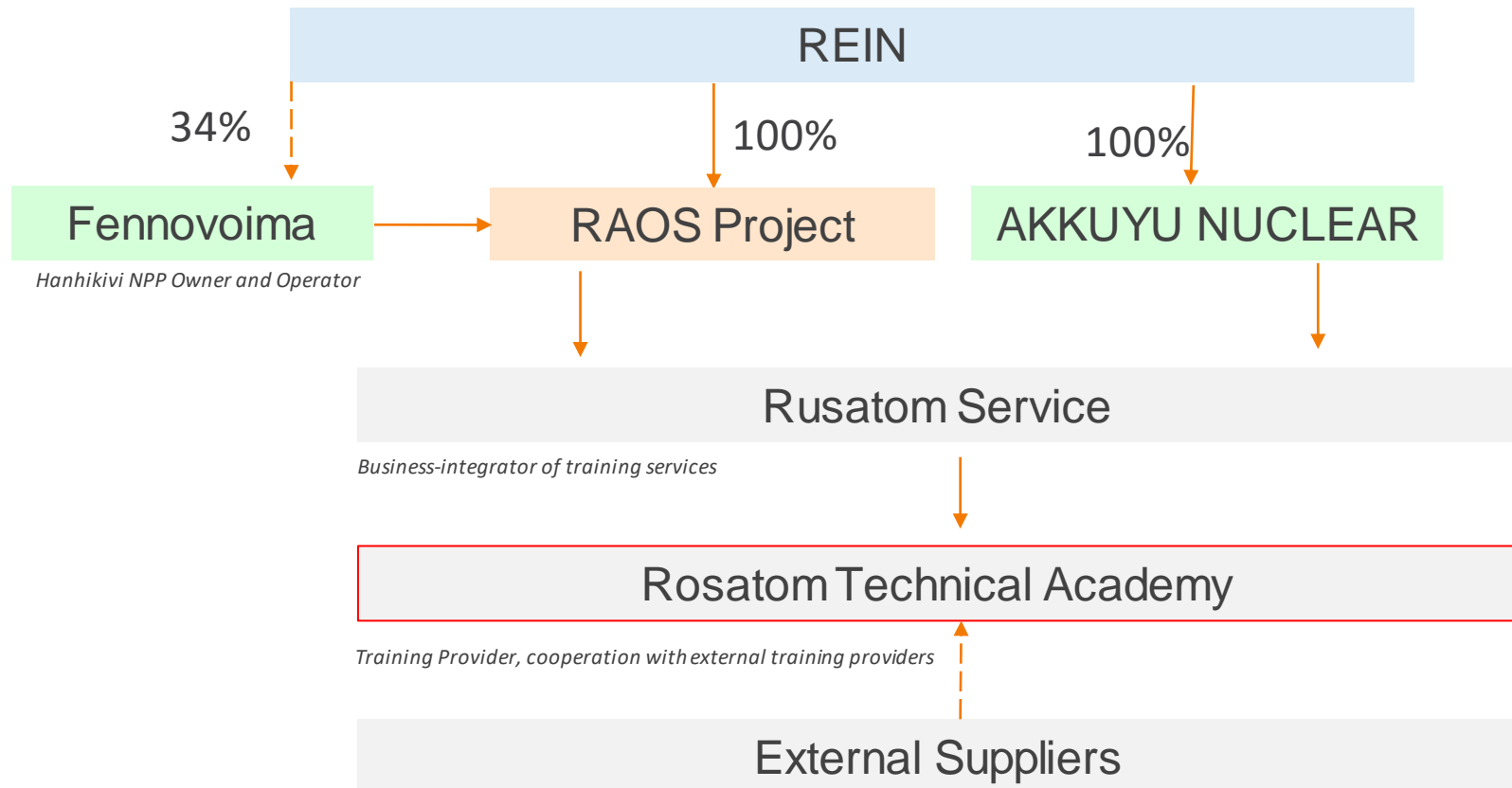


- Rusatom Energy International (REIN) runs Rosatom international projects on Russian-design NPP construction and lifetime operation based on equity ownership in project companies.
- At present, the company manages development of two major construction projects for large-capacity NPPs: Akkuyu NPP and Hanhikivi-1 NPP.
- REIN is a majority shareholder of AKKUYU NUCLEAR, founded in Turkey in 2010 to implement the project of Akkuyu NPP construction in Mersin Province.
- The single-unit Hanhikivi-1 NPP construction project is implemented by RAOS Project, which has been the general supplier for Hanhikivi-1 NPP since April 2015. RAOS Project Oy was established in Finland in February 2015 and is a 100% REIN subsidiary.

*For more see: <http://rusatom-energy.com/>*



# TRAINING SUPPLY CHAIN



# MANAGEMENT

## What is needed for successful management?

### Management system for projects and processes

Clear, defined and available processes, management procedures, requirements and objectives

Clear and defined distribution of roles, responsibilities and authorities structure

Clear criteria of inspection and assessment of result quality

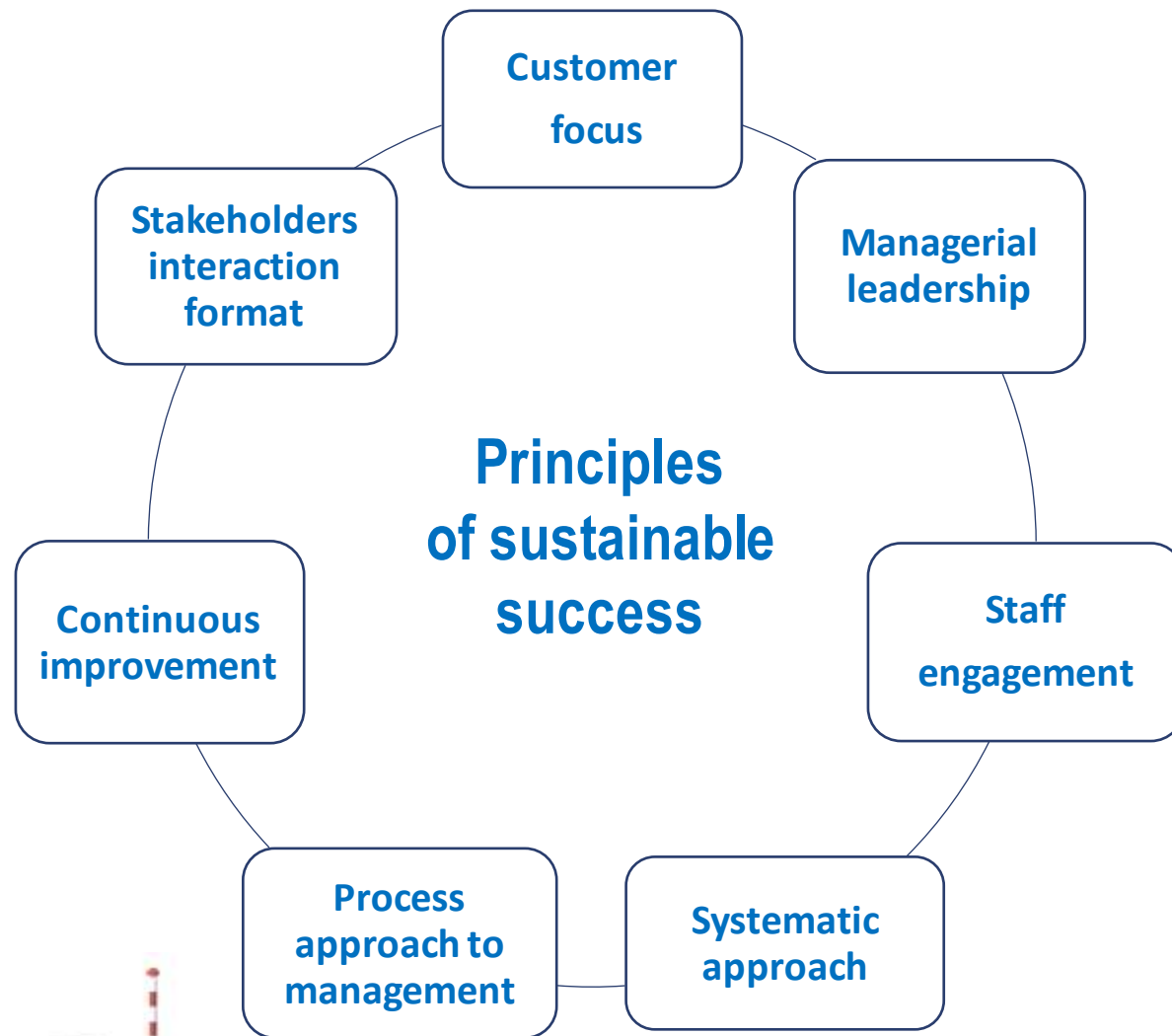
Efficient system of decision making (flexibility)

Efficient system of decision execution (predictability)

Efficient partnership among all parties engaged in training process

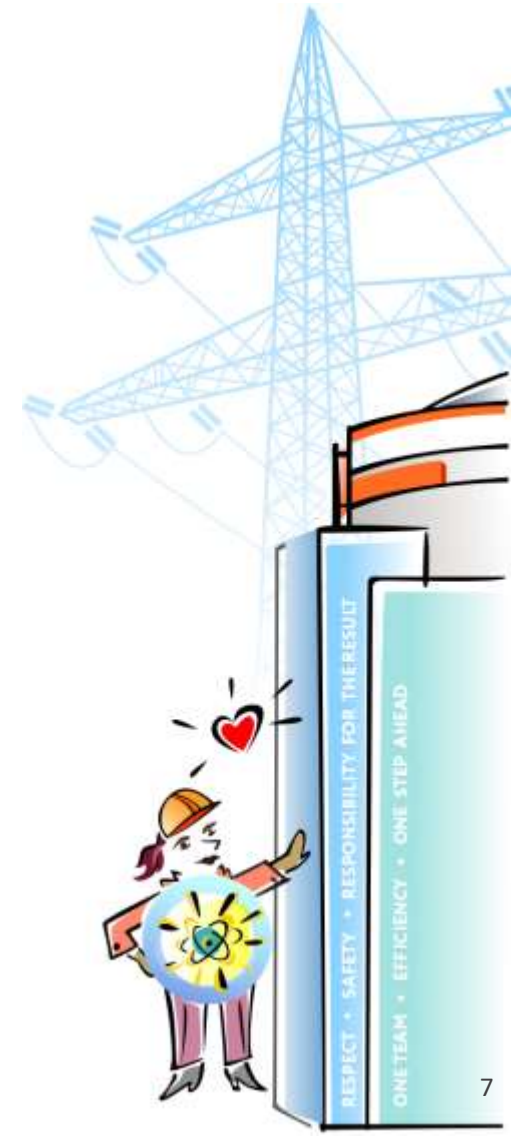


# SUSTAINABLE SUCCESS THROUGH PARTNERSHIP



# HANHIKIVI-1 AND AKKUYU TRAINING PROJECTS LESSONS LEARNT

- ✓ GLOBAL TEAM
- ✓ CLEAR COMMON OBJECTIVES
- ✓ MUTUAL UNDERSTANDING
- ✓ PROJECT MANAGEMENT
- ✓ POSITIVE INTERACTION
- ✓ TESTS OF PRODUCT
- ✓ COMMON WORK ON SYSTEMATIC APPROACH TO TRAINING
- ✓ TIMELY FEEDBACK



# ADDITIONAL AKKUYU AND HANHIKIVI-1 LESSONS LEARNT DURING PANDEMIC



- ✓ IT-INFRASTRUCTURE
- ✓ FLEXIBILITY AND PREDICTABILITY
- ✓ RISK MANAGEMENT
- ✓ IT IS POSSIBLE!



# TAKE-AWAY MESSAGE

- Effective partnership is the main prerequisite of successful training of NPP personnel.
- Project Management approach in multi-cultural environment is a tool, which makes partnership effective.
- Sustained safety culture commitment based on effective management is the focal point for our continuing international cooperation.



# Thank you for your attention

**Victoria Zhuravleva**

Head of Training Department

E-mail: [victoria.zhuravleva@rosatom.fi](mailto:victoria.zhuravleva@rosatom.fi)  
[www.raosproject.fi](http://www.raosproject.fi)



RAOS PROJECT  
ROSATOM

LinkedIn Profile:

