

如何区分

橘小实蝇 *BACTROCERA DORSALIS* 和 桃实蝇 *BACTROCERA ZONATA*



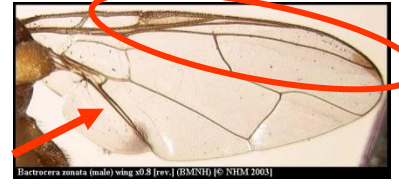
共同点均为体型较大、褐色、触角长、腿部淡黄色，翅基本透明，似黄蜂。



B. dorsalis

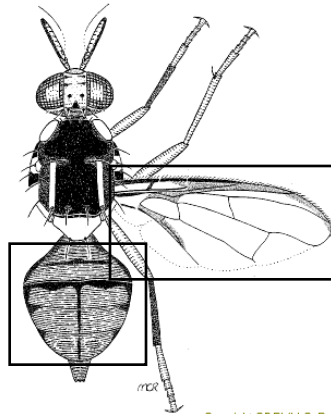
主要区别

B. zonata

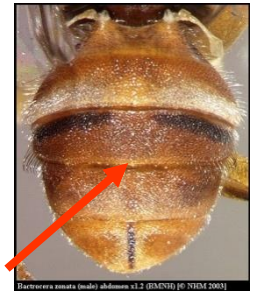


翅边缘整体有暗色条带(红圈)
翅有暗色臀条(红色箭头)

翅边缘暗色条带在两边减弱成点状(红圈)
翅无暗色臀条(红色箭头)



Copyright QDPI (M.C. Romig)



腹部背板无T型斑

腹部背板有T型斑

B. dorsalis

次要区别

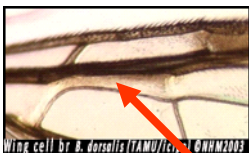
B. zonata



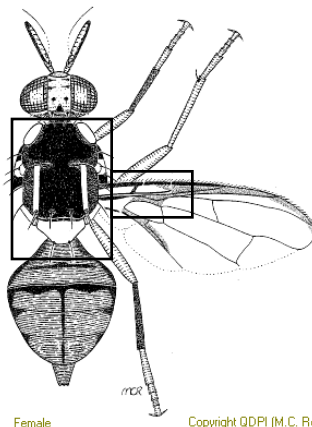
胸部背板颜色有变化，但至少部分为黑色



胸部背板全部为褐色

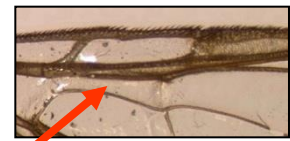


翅: br室有毛



Female

Copyright QDPI (M.C. Romig)



翅: br室无毛透明