

# DIFFERENTIATION BETWEEN *BACTROCERA DORSALIS* & *BACTROCERA ZONATA*



Both are large brownish flies with long antennae, yellowish legs and largely transparent wings. They resemble wasps.



## *B. dorsalis*

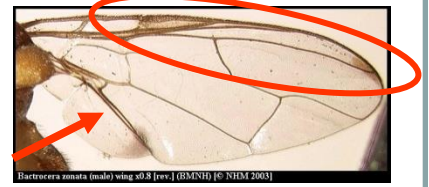
## Major differences

## *B. zonata*



*Bactrocera dorsalis* (female) wing x0.8 (YAMU/icipe) (QBHM2003)

Dark band along margin complete (circled in red)  
Dark anal streak present (red arrow)

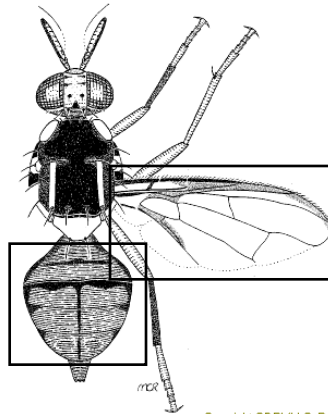


*Bactrocera zonata* (male) wing x0.8 [rev.] (BMNH) (Q NEM 2003)

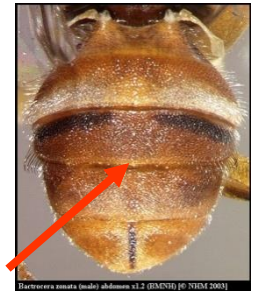
Dark band reduced to spot at beginning and end (circled in red)  
Dark anal streak absent (red arrow)



Abdomen with 'T' shaped pattern



Copyright QDPI (M.C. Romig)



Abdomen without 'T' shaped pattern

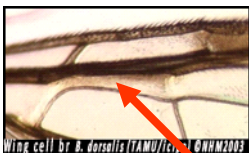
## *B. dorsalis*

## Minor differences

## *B. zonata*

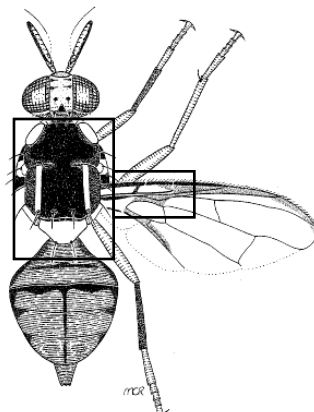


Thorax colour variable but at least partly black



Wing cell br *B. dorsalis* (YAMU/icipe) (QBHM2003)

Wing: cell br with small hairs

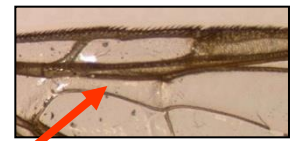


Female

Copyright QDPI (M.C. Romig)



Thorax colour completely brown



Wing: cell br without small hairs, transparent